

CANYON SPRINGS (A.K.A. FOGG SOUTH) PLANNED UNIT DEVELOPMENT

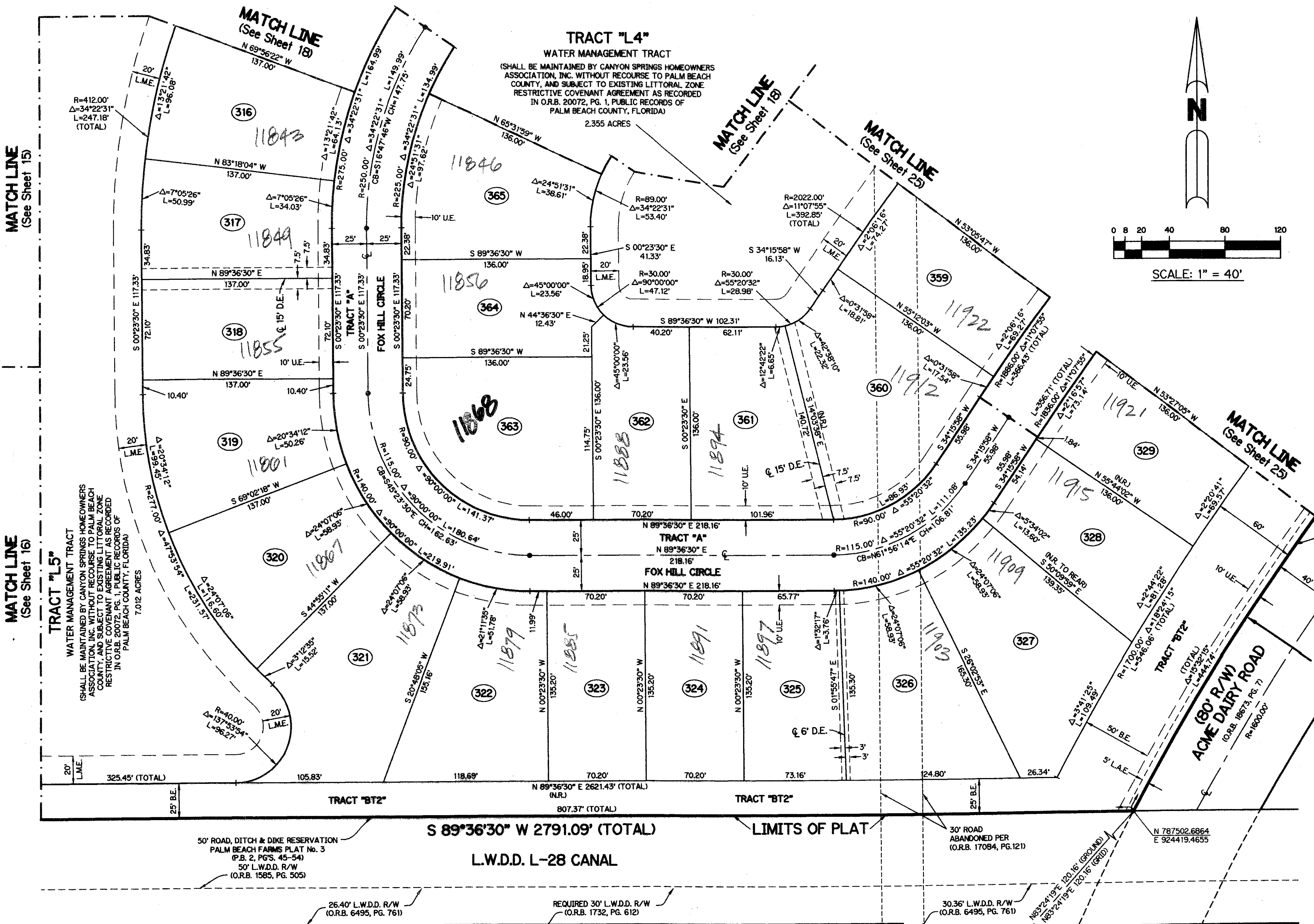
CANYON SPRINGS

BEING A PORTION OF TRACTS 69 THROUGH 92 AND TRACTS 101 THROUGH 123, BLOCK 59, AND THAT STRIP OF LAND, 30 FEET IN WIDTH, LYING BETWEEN SAID TRACTS 81 THROUGH 92 AND TRACTS 101 THROUGH 112, AND THAT STRIP OF LAND, 30 FEET IN WIDTH, LYING BETWEEN THE WEST LINE OF SAID TRACTS 72, 89, 104, 121 AND THE EAST LINE OF SAID TRACTS 73, 88, 105, AND 120, PALM BEACH FARMS COMPANY PLAT NO. 3 ACCORDING TO THE PLAT THEREOF RECORDED IN PLAT BOOK 2, PAGE 45 THROUGH 54 OF THE PUBLIC RECORDS OF PALM BEACH COUNTY, FLORIDA, LYING IN SECTION 32, TOWNSHIP 45 SOUTH, RANGE 42 EAST, PALM BEACH COUNTY, FLORIDA

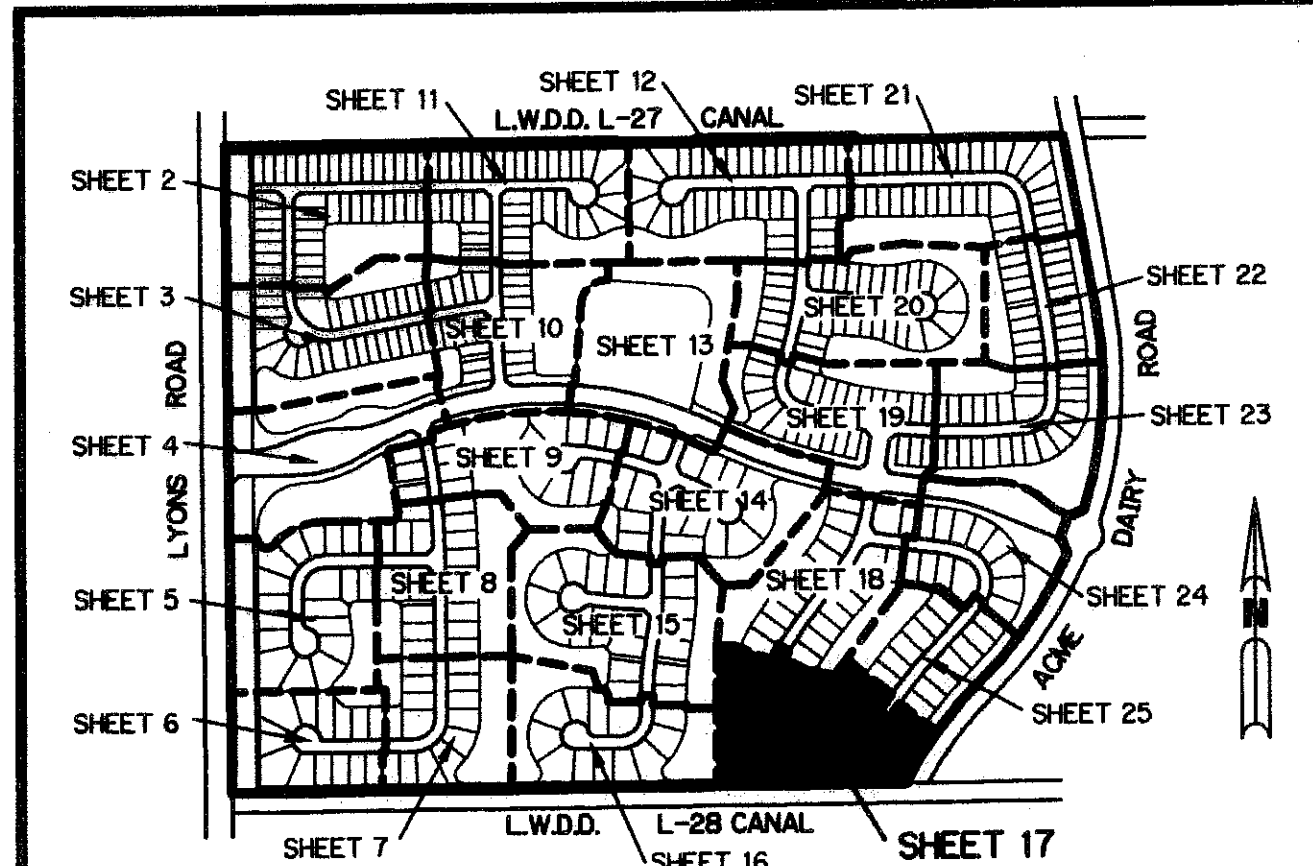
SHEET 17 OF 25 MARCH, 2006

THIS INSTRUMENT PREPARED BY
PERRY C. WHITE, P.S.M. 4213, STATE OF FLORIDA
LAWSON, NOBLE AND WEBB, INC.
ENGINEERS PLANNERS SURVEYORS
420 COLUMBIA DRIVE
WEST PALM BEACH, FLORIDA 33409
LB-6674

NOTE:
COORDINATES SHOWN ON THE GEODETIC CONTROL MEET OR EXCEED THE LOCAL ACCURACY REQUIREMENTS OF A 2 CENTIMETER GEODETIC CONTROL SURVEY.
COORDINATES SHOWN ARE GRID COORDINATES DATUM = NAD 83 (1990 ADJUSTMENT) AS READJUSTED BY PALM BEACH COUNTY IN 1998.
ZONE = FLORIDA EAST ZONE
LINEAR UNIT = U.S. SURVEY FEET
COORDINATE SYSTEM = 1983 STATE PLANE TRANSVERSE MERCATOR PROJECTION
ALL DISTANCES ARE GROUND
SCALE FACTOR = 1.0000227
PLAT BEARING = GRID BEARING



- LEGEND:**
- - SET PERMANENT REFERENCE MONUMENT, L.B. #6674
 - - FOUND PERMANENT REFERENCE MONUMENT, L.B. #6674
 - - SET PERMANENT CONTROL POINT, L.B. #6674
 - - FOUND PERMANENT CONTROL POINT, L.B. #6674
 - Δ - DELTA ANGLE
 - B.E. - BUFFER EASEMENT
 - CB - CHORD BEARING
 - CH - CHORD DISTANCE
 - C - CENTERLINE
 - D.B. - DEED BOOK
 - D.E. - DRAINAGE EASEMENT
 - GRD. - GROUND
 - L.A.E. - LIMITED ACCESS EASEMENT
 - L.M.A.E. - LAKE MAINTENANCE ACCESS EASEMENT
 - L.M.E. - LAKE MAINTENANCE EASEMENT
 - L.W.D.D. - LAKE WORTH DRAINAGE DISTRICT
 - N.R. - NOT RADIAL
 - N.T.S. - NOT TO SCALE
 - O.R.B. - OFFICIAL RECORD BOOK
 - P. - PLAT BOOK
 - P.C. - POINT OF CURVATURE
 - P.C.P. - PERMANENT CONTROL POINT
 - PGS. - PAGES
 - P.O.B. - POINT OF BEGINNING
 - P.O.C. - POINT OF COMMENCEMENT
 - P.S.M. - PROFESSIONAL SURVEYOR AND MAPPER
 - P.T. - POINT OF TANGENCY
 - R - RADIUS
 - RAD. - RADIAL
 - R/W - RIGHT-OF-WAY
 - TYP. - TYPICAL
 - U.E. - UTILITY EASEMENT
- N 100000.0000
E 100000.0000
DENOTES STATE PLANE COORDINATES



Canyon Springs
17
50
150
200
250
300
350
400
450
500
550
600
650
700
750
800
850
900
950
1000

FND. P.B.CO. BRASS DISK IN CONC. N 787593.7745 E 916248.5943
N 89°15'13" W 8052.01' (GROUND)
N 89°15'13" W 8052.19' (GRID)
FND. P.B.CO. BRASS DISK IN CONC. N 787488.89